

LEVEL 19

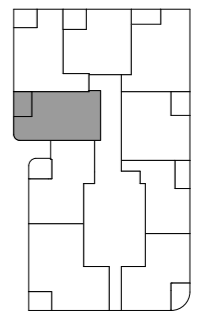
Apartment Number  
**T1 19.08**

Apartment Area	
Internal	66.95 m <sup>2</sup>
External	7.85 m <sup>2</sup>
TOTAL	74.80 m <sup>2</sup>

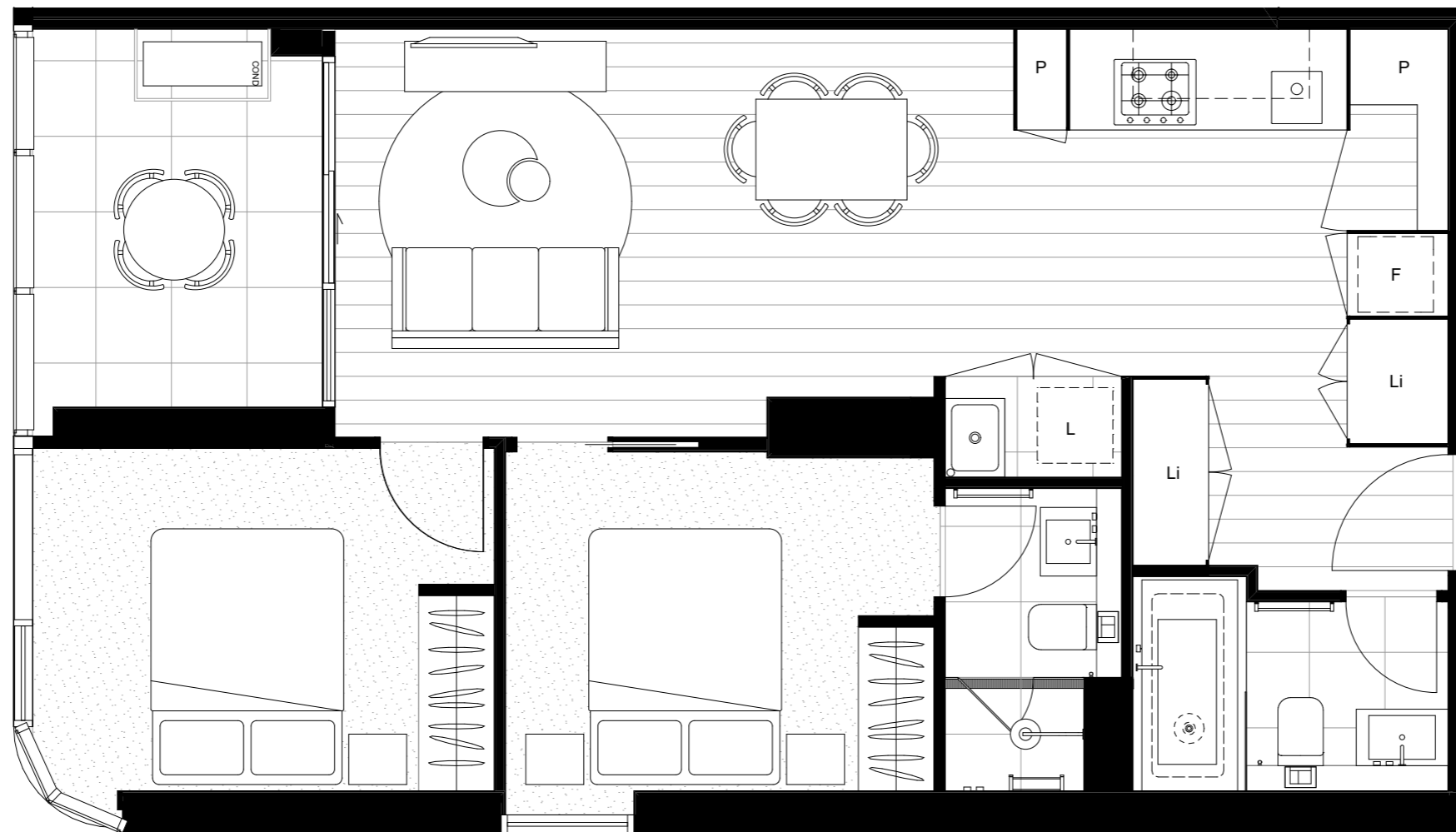
All areas measured as per Property Council of Australia Residential Method of Measurement

Apartment Type  
2 BED  
2 BATH

Key plan



F: Fridge Space  
L: Laundry  
Li: Linen Cupboard  
S: Study  
P: Parity  
A/C: Air Conditioning Condenser Unit  
\* Highlight Window in certain Baths/Enrs and Kitchen



Scale 1:50  
@ A3 0 1 2 3 4 5m



Areas referred to on this marketing drawing have been determined according to the Property Council of Australia guidelines (Method of Measurement for residential property) and method of measurement may not relate to the boundaries described or shown on the Plan of Subdivision for this development.

Date of issue: 27/08/2018